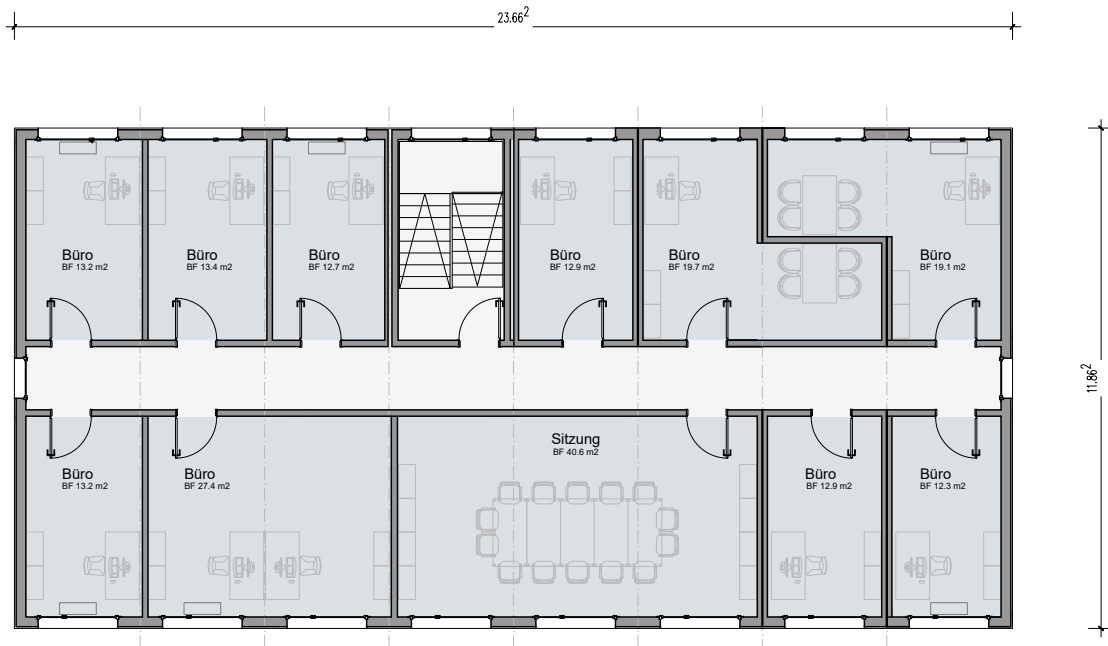


# ÜBERSICHTSPLAN



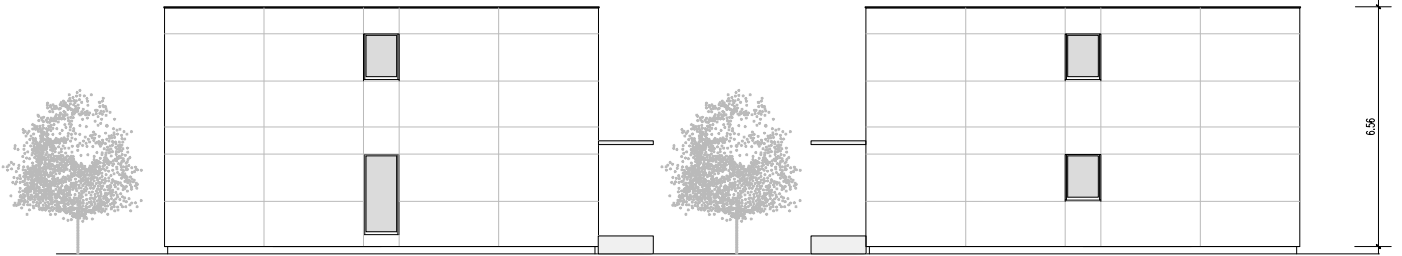
Obergeschoss

	Nutzfläche	197.4 m <sup>2</sup>
	Verkehrsfläche	51.5 m <sup>2</sup>
	<b>Total Netto =</b>	<b>248.9 m<sup>2</sup></b>



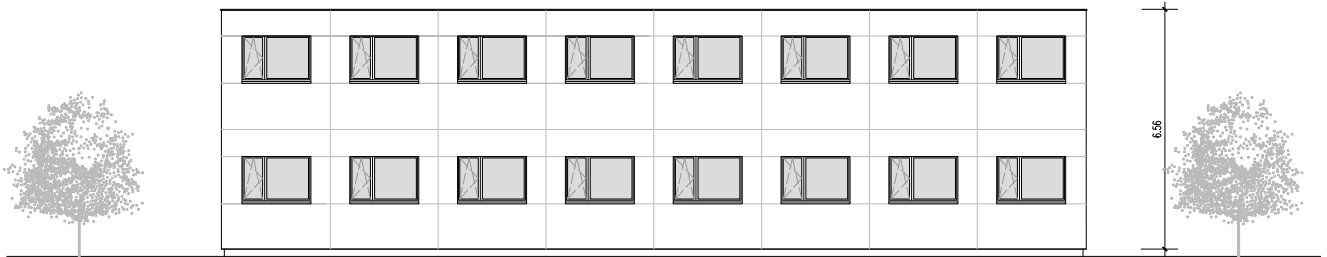
Erdgeschoss

	Nutzfläche	157.2 m <sup>2</sup>
	Verkehrsfläche	67.7 m <sup>2</sup>
	Sanitär	12.7 m <sup>2</sup>
	Technik	11.7 m <sup>2</sup>
	<b>Total Netto =</b>	<b>249.3 m<sup>2</sup></b>

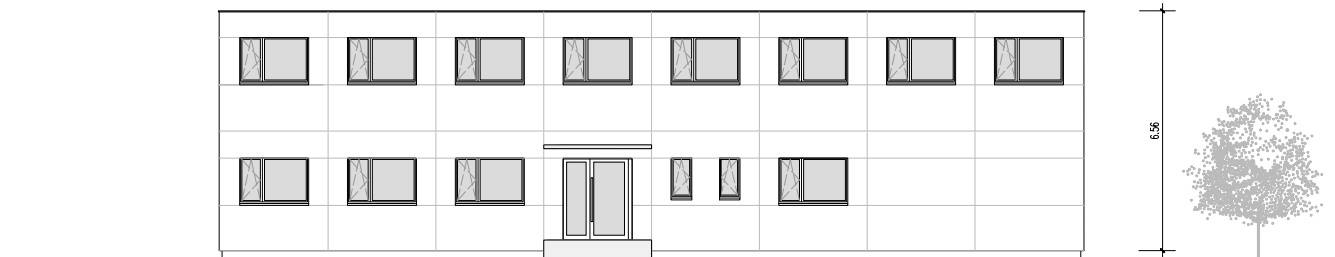


Fassade West

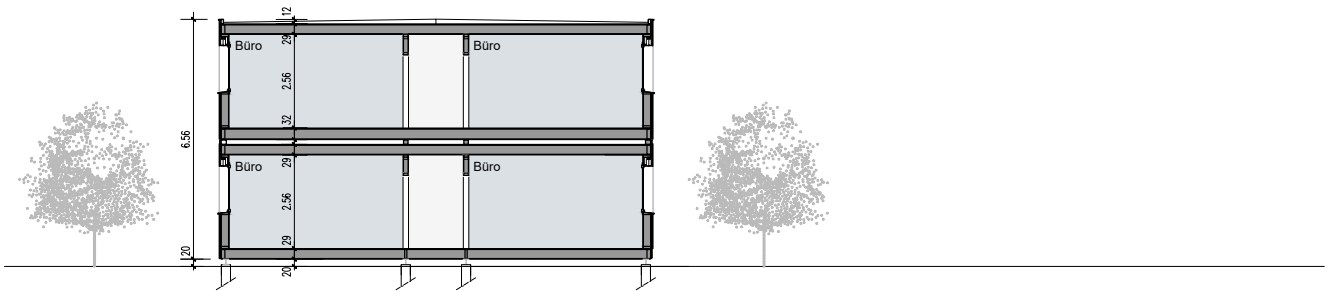
Fassade Ost



Fassade Nord



Fassade Süd



Schnitt