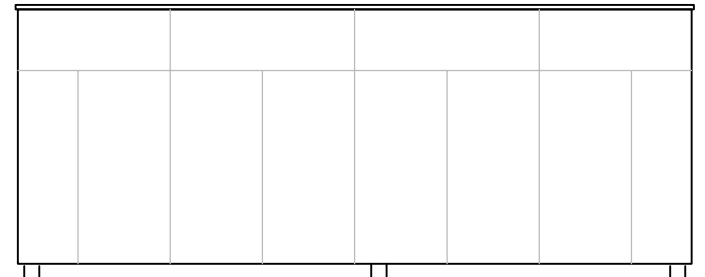
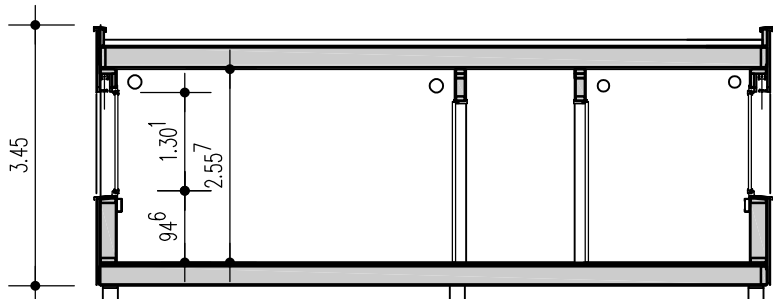
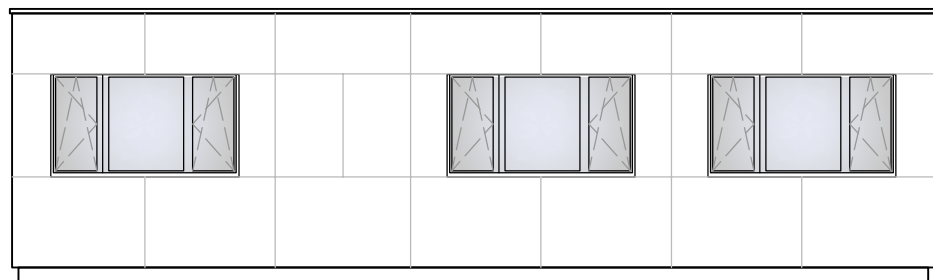


Fassade

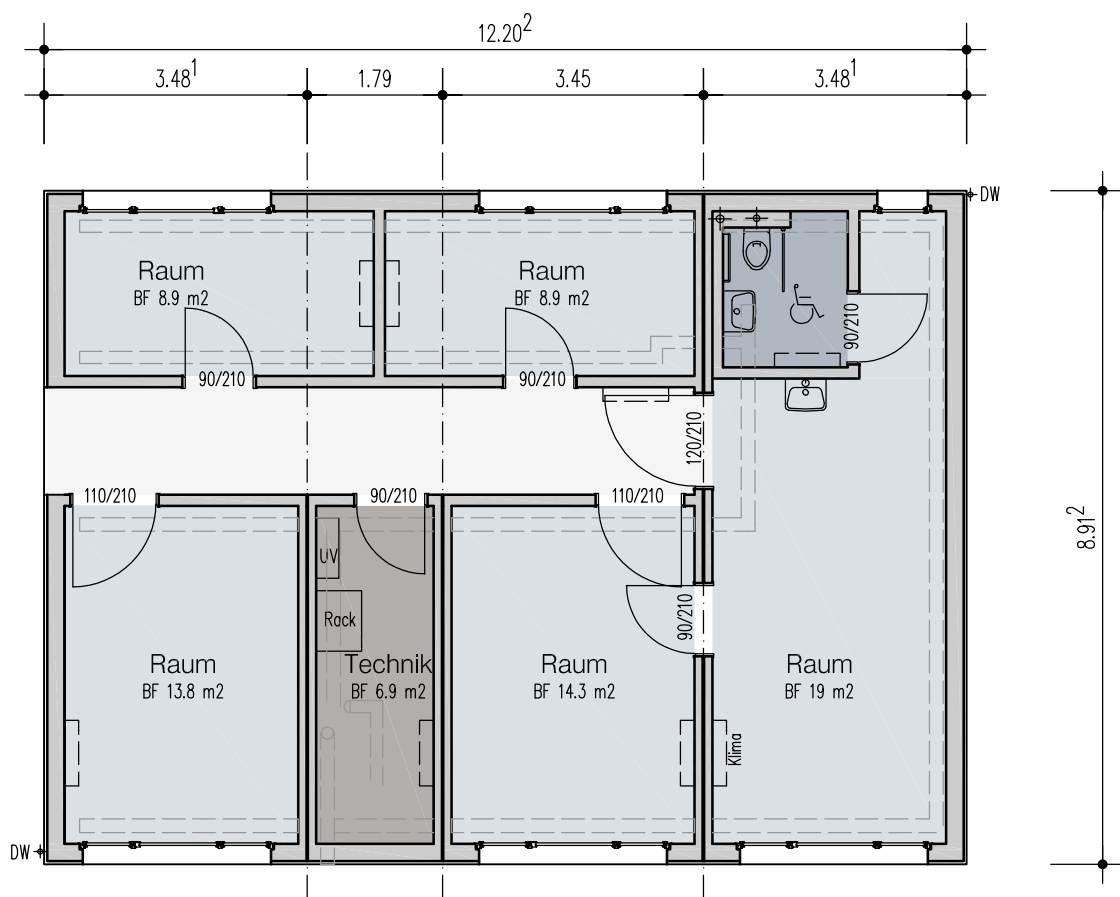


Querschnitt

Fassade



Fassade



Grundriss

	Nutzfläche	66.9 m ²
	Verkehrsfläche	13.5 m ²
	Sanitär	3.4 m ²
	Technik	6.9 m ²
Total Netto =		90.7 m ²
Total Brutto =		108.7 m ²

0 1 2 3 5m Mst. 1:100 Anlagen 50.8147.100

50_8147_100_O_000_G_A A3 **Projektplan**
Anlage Fribourg

Erstellt: 27.04.2021 Kontrolliert: 28.04.2021

Ersteller: CoL Prüfer: GiAl PLZ, Ort